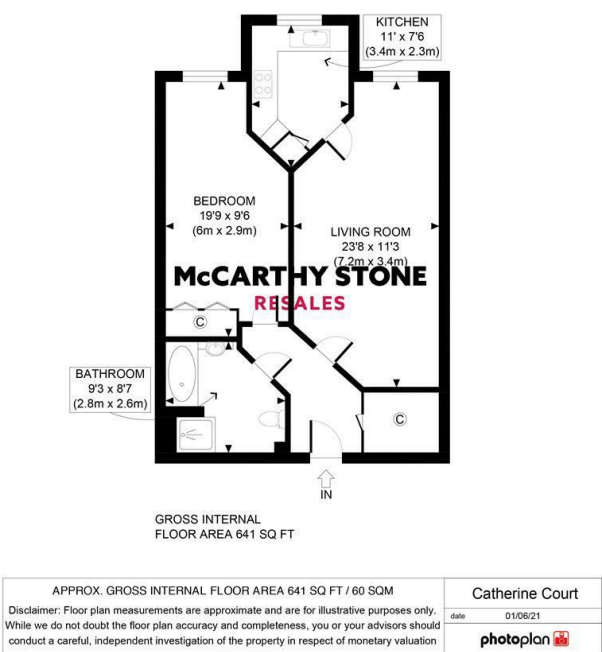


22 Catherine Court

Sopwith Road, Eastleigh, SO50 5LN

PRICE
REDUCED



PRICE REDUCTION

Asking price £74,995 Leasehold

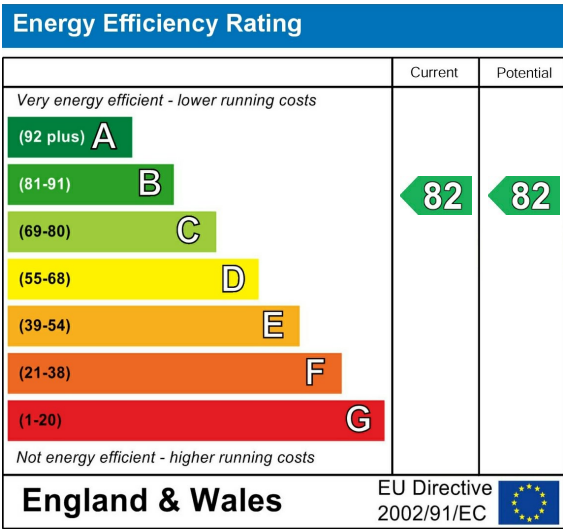
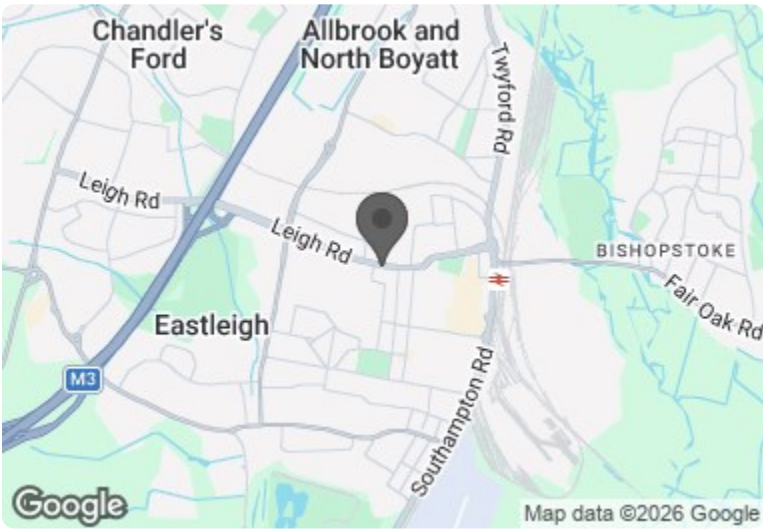
Join us for coffee & cake at our Open Day - Thursday 5th March 2026 - from 10am - 4pm - BOOK YOUR PLACE TODAY!

ENJOY LUNCH ON US WHEN YOU TAKE A TOUR OF CATHERINE COURT! McCarthy Stone Resales are delighted to present this one bedroom, Retirement Apartment, situated on the FIRST FLOOR. This energy efficient apartment benefits from a range of features as well as Catherine Court's facilities.

Call us on 0345 556 4104 to find out more.

resales@mccarthyandstone.co.uk | mccarthyandstoneresales.co.uk

Council Tax Band: B



This floor plan is not drawn to scale and is for illustrative purposes only. Any measurements, floor areas (including any total floor area), openings and orientation are approximate and for guidance only. McCarthy Stone Resales do not take liability for any error, omission or misstatement. All parties must rely on their own inspections. It should not be assumed that any furniture or fittings contained in the photographs are included in any sale. All details referring to time and distances to localities are approximate. Details regarding any common charges and other applicable fees are provided by the seller and should not be relied on without verification and further checks made through a solicitor/conveyancer. Please contact the Property Consultant for further information that Appliances (including central heating) have not been tested, therefore it cannot be assumed that they are in good working order. All interested parties are advised to check availability and make an appointment before travelling to view the property to avoid disappointment or wasted time or travel expenses. The details contained within this brochure are for information purposes only and do not form part of any agreement. All purchases will be subject to contract terms. © All artwork (photos and floorplans) and written content are the sole property and copyright of McCarthy & Stone Resales Limited and are legally protected by UK & International copyright laws. Under no circumstance may you download, reproduce, publish or distribute any content for commercial purposes, without prior written permission from McCarthy Stone Resales. Unauthorised duplication or usage for commercial purposes is prohibited by the Copyright law and will be prosecuted.



Catherine Court, Sopwith Road, Eastleigh

1 Bed | £74,995



Catherine Court is an Assisted Living development built by McCarthy & Stone, designed specifically for the over 70s, for those who wish to enjoy independent living but may need some extra care and support. There is an Estate Manager who leads the team and oversees the development. Each apartment has a fully fitted kitchen, underfloor heating, fitted and tiled shower room with level access shower and a 24 hour emergency call system.

Communal facilities include a homeowners lounge where social events and activities take place, a function room and a roof top terrace overlooking the landscaped courtyard. There are two fully equipped laundry rooms and a restaurant which is table service and serves freshly prepared meals daily. If your guests wish to stay, there is guest suite accommodation which can be booked (fees apply). There is a 24 hour emergency call system provided by a personal pendant and call points in your bedroom and bathroom as well as onsite management 24 hours a day.

One hour of domestic support per week is included in the service charge at Catherine Court with additional services including care and support available at an extra charge. However, this can be from as little as 15 minutes per session which can be increased or decreased to suit your needs.

Catherine Court is conveniently located for

Eastleigh town centre with the High Street located close to the development.

ENTRANCE HALL
Front door with spy hole leads to the entrance hall with individual thermostat and the 24 hour Tunstall emergency response pull cord system and security door entry system. Illuminated light switches and smoke detector. From the hallway there is a door to a walk in storage and airing cupboard,. Doors lead to the bedroom, living room and bathroom.

LOUNGE
A spacious lounge/dining room. Two ceiling light points, power points. TV & telephone points. Partially double glazed doors lead onto a separate kitchen.

KITCHEN
Fully fitted modern style kitchen with cupboard doors and co-ordinated work surfaces. Electronically operated double glazed window. Contemporary ceiling lights. Stainless steel sink with chrome mixer tap. There is an integrated fridge/freezer and built-in electric oven and electric ceramic hob with extractor hood over.

BEDROOM
Double bedroom with mirror fitted wardrobes. TV and phone point, ceiling lights.

BATHROOM
Tiled and fitted with bath and walk-in level access shower. Toilet, vanity unit with sink and mirror above, there are grab rails and non slip flooring. Emergency pull cord.

Service Charge

- Cleaning of communal windows
- Water rates for communal areas and apartments
- Electricity, heating, lighting and power to communal areas
- 24 hour emergency call system
- Upkeep of gardens and grounds
- Repairs and maintenance to the interior and exterior communal areas
- Contingency fund including internal and external redecoration of communal areas
- Buildings insurance
- One hour of domestic support per week is included in the service charge.

The Service charge does not cover external costs such as your Council Tax, electricity or TV, but does include the cost of your Estates Manager, your water rates, our 24 hour emergency call system, the heating and maintenance of all communal areas and all external window cleaning, exterior property maintenance and gardening. Please contact your Property Consultant or Estates Manager for further information.

Service charge: £10,384.57 per annum (for financial year ending 31/03/26)

Car Parking Permit scheme(subject to availability)
Parking is by allocated space, subject to availability. The fee is usually £250 per annum, but may vary by development. Permits are available on a first come, first served basis. Please check with the House Manager on site for availability.

LEASEHOLD
Lease 125 Years from June 2012
Ground Rent: £435.00 per annum
Ground rent review date: June 2027

